

ALLURE CLASSIC CURTAIN POLE FITTING INSTRUCTIONS

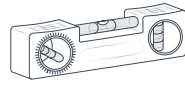
FITTING HARDWARE



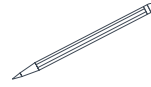
Stepladder



Metal tape measure



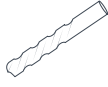
Spirit level



Pencil



Drill



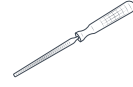
Drill bit



Hacksaw



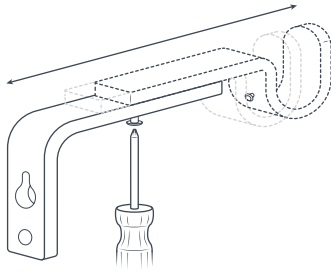
Philips head screwdriver



File

1 ADJUSTING BRACKETS

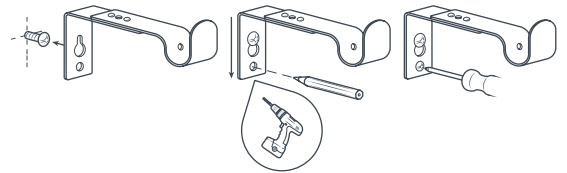
If you need to adjust the bracket projection, loosen the screws to move to the desired position. Once this has been done, tighten the screws back up.



2 MOUNTING BRACKETS

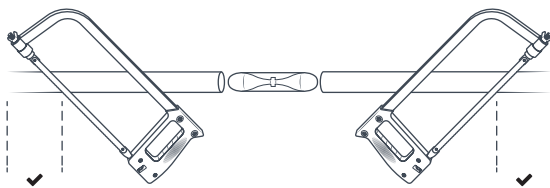
Using a spirit level, position the brackets on the wall and mark the top line. We suggest 5 to 10cm above and to each side of the window recess; this ensures maximum coverage when the curtains are closed.

When the brackets are in the correct position, mark the mounting holes with a pencil. Drill these holes and attach the brackets.



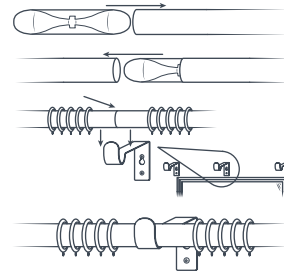
3 ADJUSTING LENGTH

If required, use a hacksaw to trim an equal amount of each pole section. If there are any rough edges, carefully use a file to smooth them out.



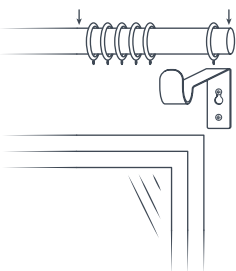
4 MOUNTING THE POLE

If the pole is 300cm or 360cm, use the joining piece supplied. This is inserted halfway into one pole, and the other pole is slid onto it. Next, place the pole into the bracket and secure with the bracket screw.



5 CURTAIN RINGS

If the pole is supplied with rings, place them as shown. Do the same for eyelet curtains and tab top curtains.



6 SECURING THE POLE

Finally, double check all the brackets and finials are fully secured before hanging the curtains.

