

*Made For Your Windows,
Powered For Your Convenience.*



Fitting & Pairing Guide

Designer Roller Blind

The Installation Of This Product Should Be Conducted By Someone Competent In DIY.

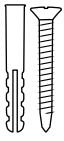
Fitting & Pairing Guide

In The Box	1
Installing Your Blind	2-3
Get To Know Your Remote	4
Pairing A Blind To A Remote	5-7
Advanced Settings	8
Safety Information	9

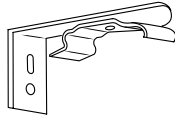


In The Box

NOTE
Do not free the blind with a knife or any object that may cause damage to the fabric.



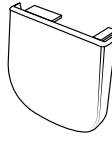
Screws
Rawl Plugs



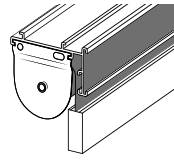
Face Fix
Bracket*



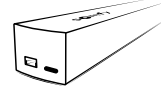
Top Fix
Bracket*



Designer
End Cap x2



Blind



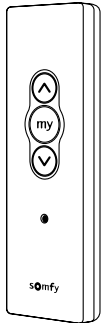
External battery pack
(If you've ordered a narrower blind, an external battery pack will be included with your order. This should be fitted discreetly behind the headrail to maintain a seamless, uncluttered look. The external battery pack works with your Somfy charger, so charging remains just as simple)

*Top OR Face fix brackets supplied based on purchase selection.



Your Controls

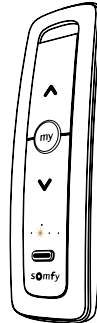
Your order includes the remote selected at checkout. Additional controls are available at www.poweredblinds.co.uk



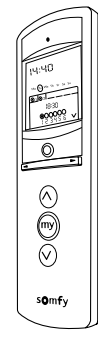
SITUO RTS
Single Channel Control



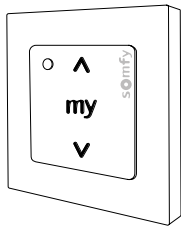
SITUO 1 RTS PURE
Single Channel Control



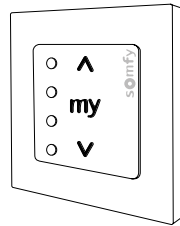
SITUO 5 RTS PURE
Multi Channel Control



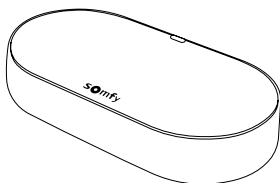
TELIS 6 CHRONIS PURE
Six Channel Control



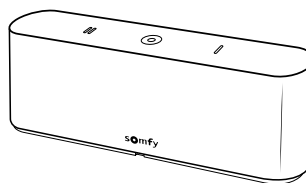
SMOOVE ORIGIN RTS
Single Channel Control



SMOOVE ORIGIN 4 RTS
Four Channel Control



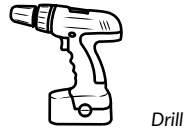
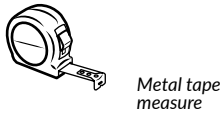
Hub
Connectivity Kit



Hub
TaHoma Switch



Fitting Hardware



1

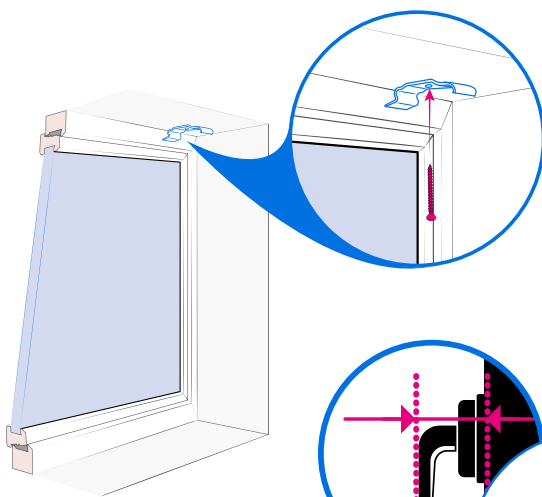
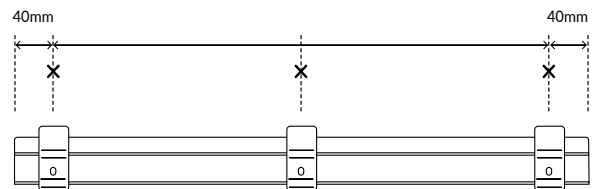
Positioning The Brackets

Decide how you'd like to mount your brackets. Choose the method that best suits your window and space.

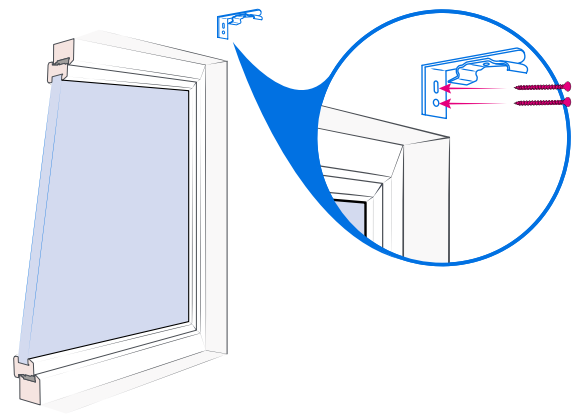
Deciding Where To Mount The Brackets

We have sent brackets to allow you to top fix or face fix your blind depending on your choice at the time of purchase. When positioning the brackets allow room for the blind to clear any obstacles such as door or window handles when deployed.

Fix brackets approximately 40mm from each end of the blind. Intermediate brackets should then be spaced evenly between these.



Top Fix



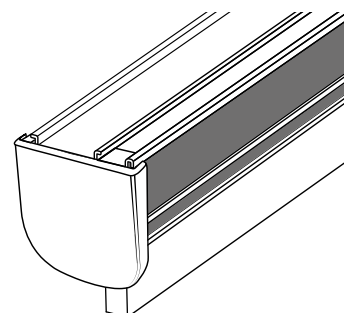
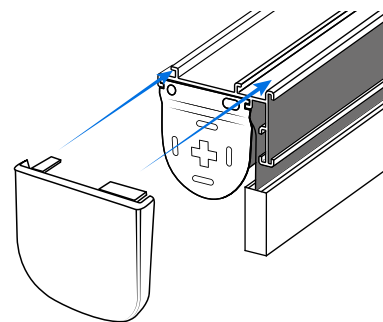
Face Fix

NOTE

Remember to allow room for the blind to clear any obstacles such as door or window handles when deployed.

Attaching The End Caps

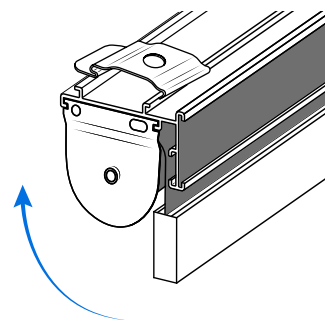
Position the end caps with the decorative side facing forward. Simply line up the tabs on the top of the end cap with the corresponding holes on the headrail and push in until flush.



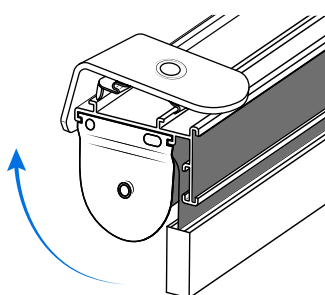
Fixing The Headrail To The Brackets

The track should be fitted into the brackets. Hook the front of the bracket onto the headrail (as shown in the illustrations) and then push the back of the headrail towards the backside of the bracket to be flush with the window frame.

If done correctly you will hear the headrail snap into place.



Top Fix



Face Fix

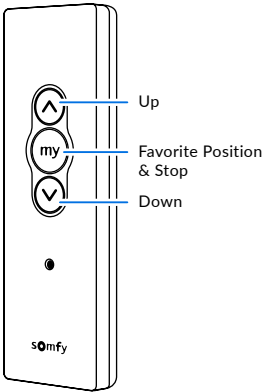




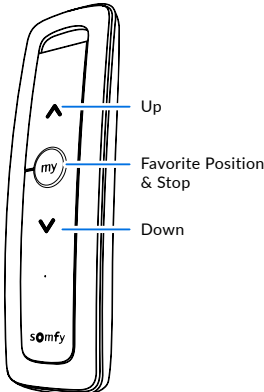
Channels

A remote can have one or more channels depending on your purchase. You can pair up to ten blinds per channel which will all be operated at the same time.

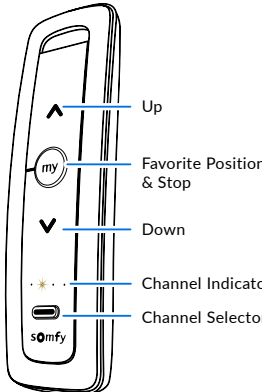
Note: Other Somfy controls and wall switches will operate the same way based on the control buttons.



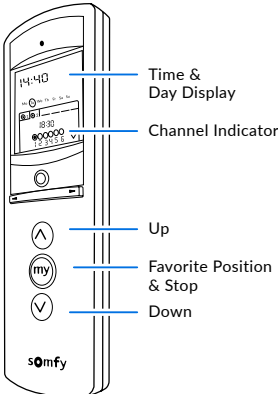
SITUO RTS
Single Channel Control



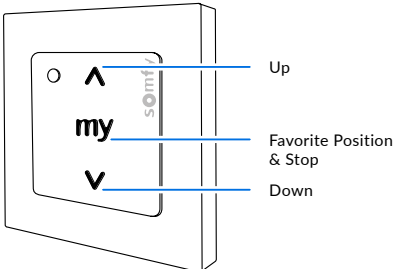
SITUO 1 RTS PURE
Single Channel Control



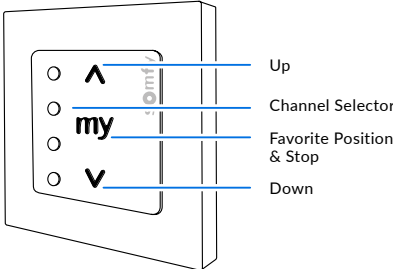
SITUO 5 RTS PURE
Multi Channel Control



TELIS 6 CHRONIS PURE
Six Channel Control



SMOOVE ORIGIN RTS
Single Channel Control



SMOOVE ORIGIN 4 RTS
Four Channel Control



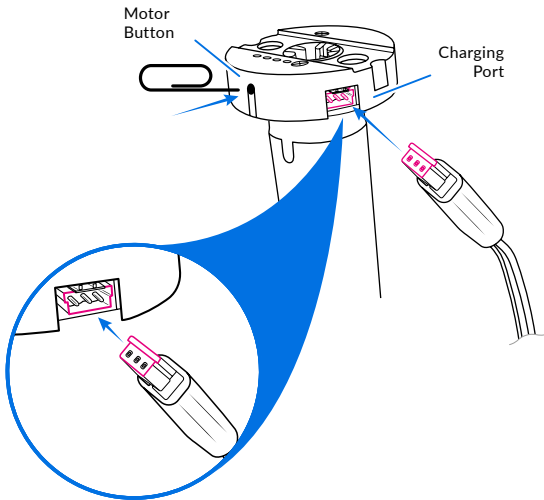
Before You Begin The Pairing Process Activate Your Motor

If your motor has a charging port:

To activate the motor, use a pin or paperclip to briefly press the button next to the charging port, or connect the charger. The blind will jog up and down three times indicating the motor is active.

If your blind doesn't jog, simply plug in the power adapter until the light on the plug turns green.

Note: the charging connector will only fit one way. See graphic for more information.



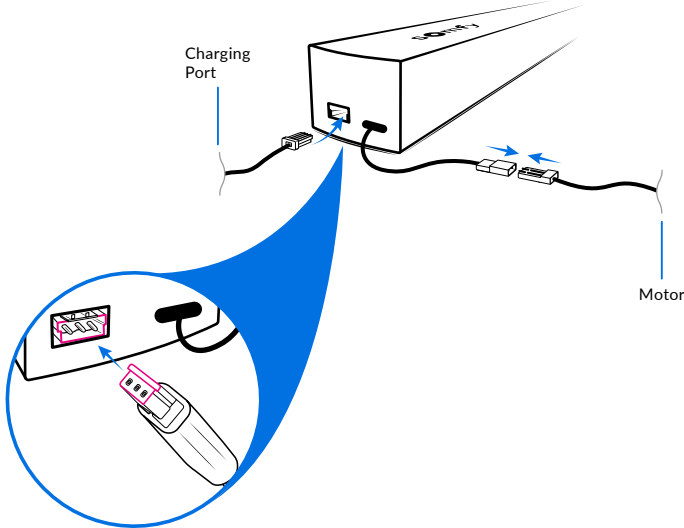
NOTE
If you are setting up multiple electric blinds, complete the setting up process of one blind before waking up any subsequent blinds.

If you have received an external battery pack:

To activate the motor, connect the battery to the motor. The blind will jog up and down three times indicating the motor is active. The blind is now ready to pair with the remote.

If your blind doesn't jog, simply plug in the power adapter for 3-4 hours.

Note: the charging connector will only fit one way. See graphic for more information.



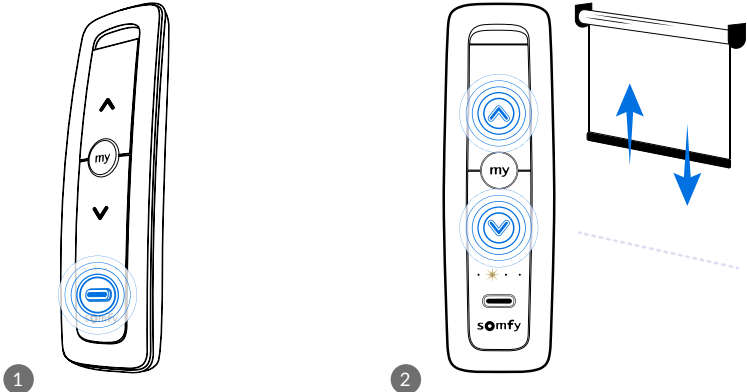
1

Pairing A Blind To A Remote

Whether you're setting up a single channel remote, or a multi channel remote, the setting up process is exactly the same.

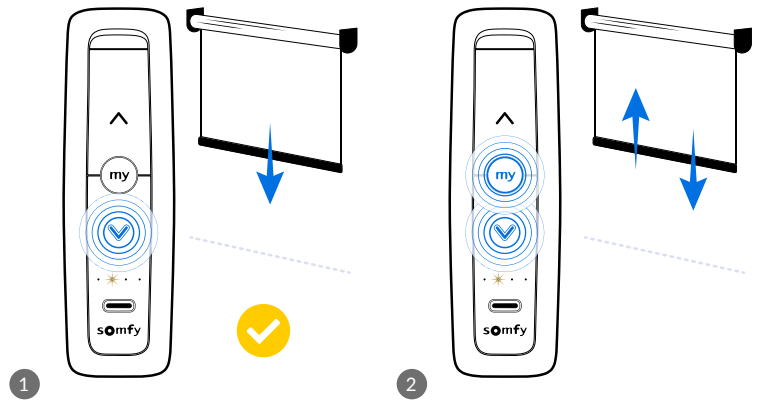
- 1 If you are using a multiple channel remote, set your remote to the channel you will connect this blind to.
- 2 To pair your remote to the blind, press the **UP** and **DOWN** BUTTONS on your remote together.

The blind will then briefly jog up and down indicating it is now paired with the remote.



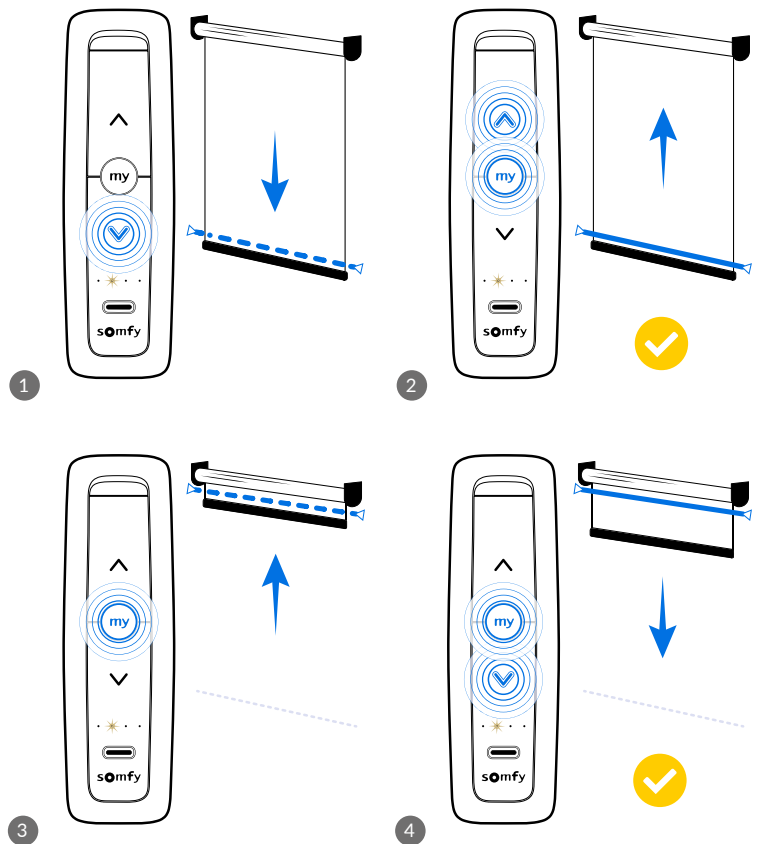
Checking The Direction Of Travel

- 1 Check the direction of travel by pressing and holding the **DOWN BUTTON** until the blind moves. Release the button to stop it. If the blind moves downwards, it is correctly set up and you can progress directly to **step 3**.
- 2 However, if the blind starts to go up while pressing the down button, press and hold the **"MY" BUTTON** until it jogs, and press the **DOWN BUTTON** again to lower your blind and verify the direction is now set correctly.



Setting Your Blind's Open & Closed Positions

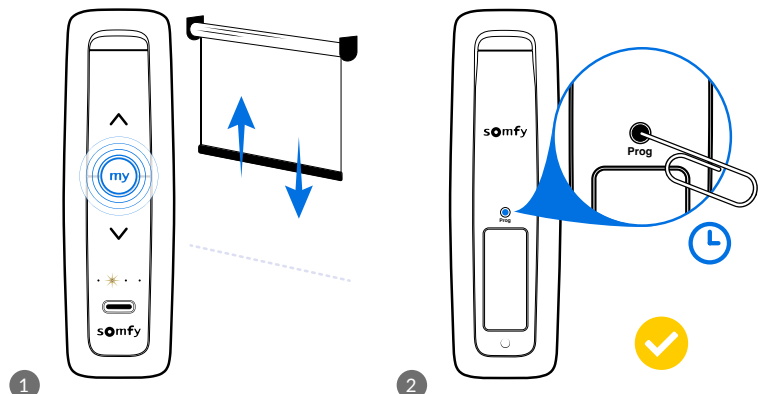
- 1 To set the closed position for your blind, press and hold the **DOWN BUTTON** to move your blind and once at the desired location release the button. You can fine tune this by tapping the up and down buttons as required.
- 2 Once the blind is in your preferred closed position, press and hold both the **"MY" BUTTON** and the **UP BUTTON** simultaneously. When the blind begins to rise, the closed position has been set.
- 3 Press the **"MY" BUTTON** when your product reaches the desired open position. You can fine tune this position by tapping the up and down buttons as required.
- 4 Once the blind is in your preferred open position, press and hold both the **"MY" BUTTON** and the **DOWN BUTTON** simultaneously. When the blind begins to lower, the open position has been set. The blind will automatically stop at your preferred closed position.



Completing The Pairing Process

- 1 Press and hold the **"MY" BUTTON** until the blind briefly jogs up and down.
- 2 Complete the process, using a pin or paperclip to tap (0.5s) the **"PROG" BUTTON** on the back of the remote once. The blind will jog up and down to confirm. The programming process is complete and the blind motor is programmed.

The blind will now operate with a brief press of the Up or Down buttons and automatically stop at the preset stop positions.





Before Setting Up Your Next Blind

If your motor has a charging port:

Before moving to the next blind, put the previously set up blind/s into sleep mode.

- 1 First, press and hold the MOTOR BUTTON until the blind jogs once.
- 2 Press and hold all three buttons on the remote simultaneously until the blind jogs once.

Once all blinds are set up, wake each blind up by tapping the motor button on the blind until the blind jogs.

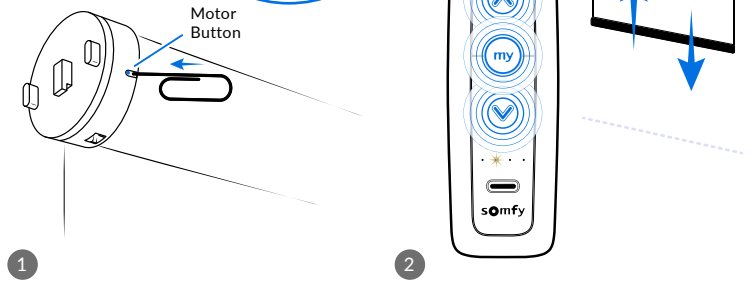
If you have received an external battery pack:

Simply unplug the motor.

Once all blinds are set up, wake each blind up by tapping the motor button on the blind until the blind jogs.

NOTE

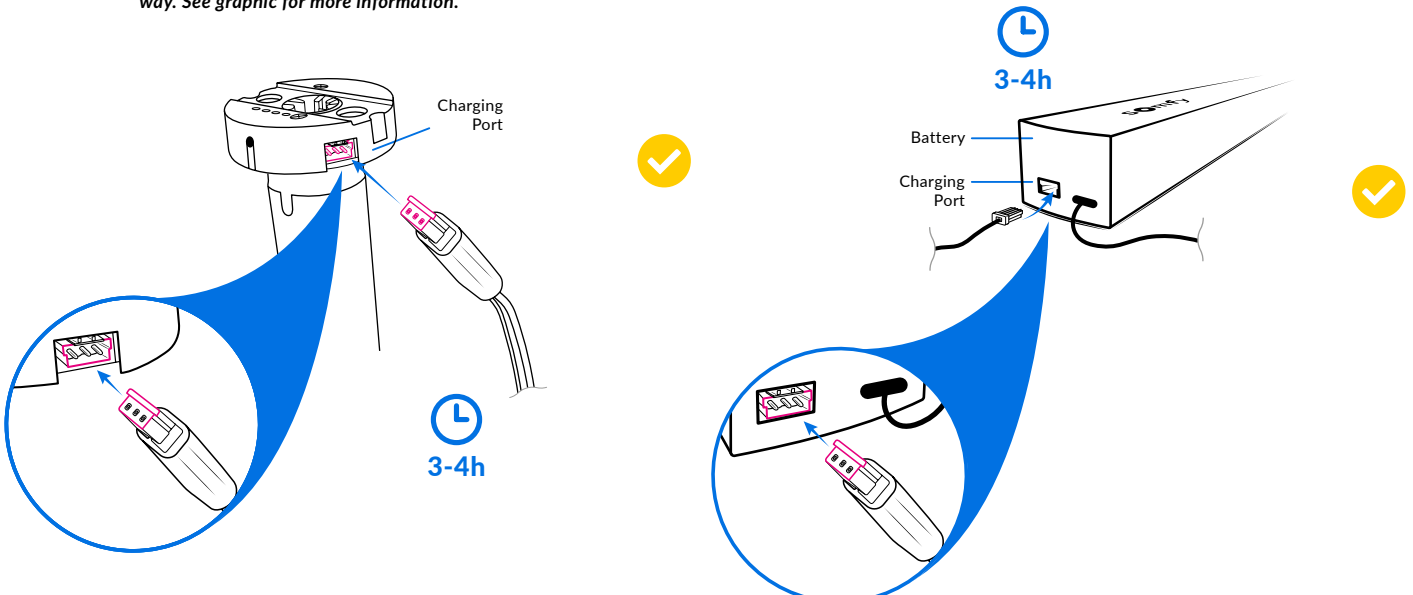
You must have completed the previous steps including the confirmation of chosen positions before moving on to set up the next blind.



Recharging The Battery

Depending on the size of your blind, the motor will need recharging approximately every 6 – 12 months. Your blind will be supplied with either a built-in rechargeable battery or rechargeable external battery pack. Both are compatible with your Somfy charger. When your battery needs recharging, the blind will jog intermittently to draw attention. To recharge, simply plug in your power adapter for around 3 – 4 hours. During charging, the blind will jog once and the LED on the plug will turn red. Once the LED turns green, the battery is fully charged.

Note: the charging connector will only fit one way. See graphic for more information.





Advanced Settings

Adding Multiple Blinds To A Control Channel On A Multichannel Remote

- To add multiple blinds to one channel so that they operate at the same time, follow these steps.
- Select the existing channel you'd like to copy then press and hold the "prog" button on the back of the remote until the blind jogs.
- Select the channel to become the "multi blind channel" and tap the "prog" button on the back of the remote until the appropriate blind jogs. This indicates the settings have been copied.
- Repeat as needed to add more blinds to your designated "multi blind channel".

Setting A Favourite Position

- Using the up and down buttons as required, find a position that you'd like to favourite and press the "MY" button to stop the blind.
- Press and hold the "MY" button until the blind briefly jogs up and down. The position is now set.
- Once set, simply press the "MY" button to move the blind to your favourite position.

Adjusting Upper & Lower Limits

- Once your blind is set up, if you need to edit your open or closed limits, first move your blind to the limit you want to adjust.
- Click and hold the up and down buttons simultaneously until the blind jogs up and down.
- Click and hold the up or down buttons to move the limit.
- Click and hold the "MY" button until the blind jogs to confirm the new limit.

Changing Speed

- To change the speed of your blind, first move the blind to a non-preset position.
- Press all three buttons on the front of the remote at the same time.
- The blind will begin moving up and down to demonstrate the speed options.
- Click and hold the up button, the blind will stop, jog and move to a quicker setting.
- Alternatively, hold the down button, the blind will stop, jog, and move to a slower setting.
- If the blind has reached the quickest or slowest setting, the blind will jog up and down three times and continue moving. Click and hold the "MY" button to confirm the new speed. The blind will jog to confirm.



Electric Blinds - Recycling Expired Batteries

We are committed to reducing waste. As part of this commitment we will accept returned batteries and arrange for the recycling of expired batteries from your electric blind.

To arrange collection:

- Call 01484 622555 - and let us know you are planning to return your battery.
- Remove the motor housing the battery from the blind and package securely, including your original order number on the packaging.
- Arrange delivery of your package via a courier of your choice.
- Upon receipt the battery will be recycled with appropriate waste management services.



Safety Information

Please read and follow all safety instructions carefully before installation and use.

- **Children's Safety:** Never allow children to play with the blind or its control device. Keep remote controls and switches out of reach of children at all times.
- **Safe Installation:** Ensure the product is installed securely following these fitting instructions. The control switch (if used) must be positioned within sight of the blind's movement but away from moving parts and at a height compliant with national safety regulations (ideally below 1.3m where possible).
- **Do Not Modify:** Do not alter the product's design, wiring, or configuration without consulting the manufacturer or authorised representative. Modifications may compromise safety and invalidate your warranty.
- **Manual Release (where applicable):** Take care when operating any manual release feature, particularly if the blind or curtain is raised, as it may lower rapidly.
- **Inspection & Maintenance:** Regularly check the blind, power cables, and controls for signs of wear or damage. If damage is found, stop using the product and contact your retailer or installer for advice.
- **Electrical Safety:** Always disconnect the product from the power supply before carrying out cleaning, maintenance, or inspection of electrical parts.
- **Operating Out of View:** If operating your blind or curtain remotely without a direct line of sight, ensure no one is in the area during movement - particularly during cleaning or maintenance near windows or walls.
- **Noise Levels:** The noise emission level of this powered blind or curtain track is ≤ 70 dB(A), which is below the level considered hazardous to hearing.
- **Retain for Reference:** Keep these instructions for future reference and share them with anyone who may operate or maintain the pro.