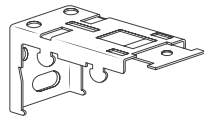


## ROMAN BLIND DELUXE HEADRAIL FITTING INSTRUCTIONS

### FITTING COMPONENTS

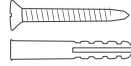
Assembly and installation of this product can be completed by non-professionals, in accordance with current trade and safety standards. Please consult a professional if any doubt exists.



Fixing brackets:  
quantity to suit  
length of blind



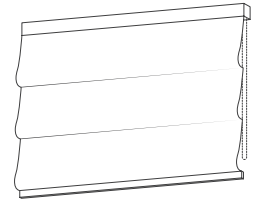
Wood screws:  
4+



Screws: 4+  
Rawl plugs: 4+



P-Clip



Blind

### FITTING HARDWARE



Drill



Philips head  
screwdriver



Stepladder



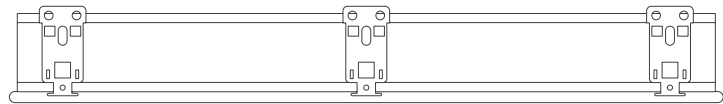
Drill bit



Pencil

### 1 BRACKET POSITION

Place blind in fitting position, space the brackets evenly.



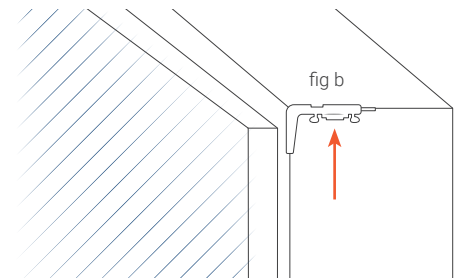
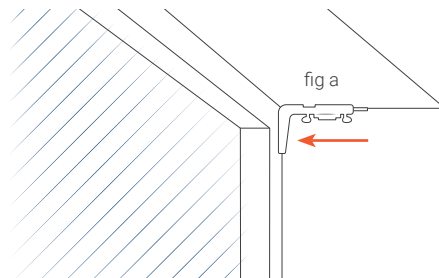
### 2 INSTALLING BRACKETS

#### Face Fixing (fig a)

Position bracket against the surface and mark out the holes in the back of the bracket. Use rawl plugs if fitting to the wall.

#### Top Fixing (fig b)

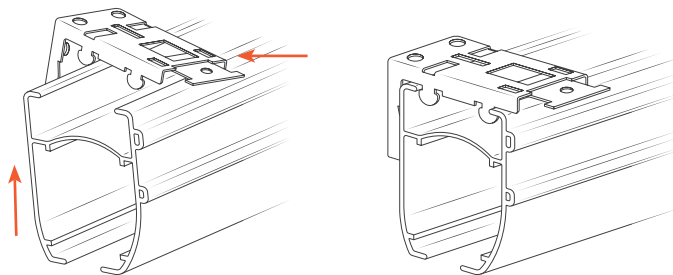
Position bracket against the surface and mark out the holes in the top of the bracket. Use rawl plugs if fitting to the wall.



### 3 FITTING THE HEADRAIL

Place the front lip of the headrail into the first cradle on the bracket. Gently push back against the cradle and it will withdraw, allowing you to hook the back lip of the headrail into the back cradle. Simply release the headrail and your blind will be locked in place.

The headrail shall not be installed at less than 1.5m from the floor.



### 4 OPERATING YOUR BLIND

\* Once installed, use the operating chain at the side to raise and lower your blind.



Young children can be strangled by loops in pull cords, chains, tapes, and inner cords that operate the product. To avoid strangulation and entanglement, keep cords out of the reach of young children. Cords may become wrapped around a child's neck. Move beds, cots, and furniture away from window covering cords. Do not tie cords together. Make sure cords do not twist and create a loop.

#### P-CLIP

The device must be installed at maximum distance possible from the control mechanism, and not less than 1.5m from the floor, to prevent the looped cord/chain from becoming slack.

1. Ensure the control chain is inside the P-Clip.
2. Ensure the chain is taut and that the P-Clip is at the bottom of the loop and that the chain's able to manoeuvre properly.
3. Screw the P-Clip to a wall adjacent to the blind ensuring that the chain remains taut. The chain will be held permanently taut and under constant tension.

